

SPC CONTROL PANEL AND CABINET

SPC42

- 8 - 32 zones
- 4 doors / readers
- 32 wireless zones
- 4 Areas
- 100 Users in total
- Ethernet dialer onboard

SPC52/SPC53

- 8 - 128 zones
- 16 doors / readers
- 64 wireless zones
- 16 Areas
- 500 Users in total
- Ethernet dialer onboard

SPC63

- 8 - 512 zones
- 64 doors / readers
- 64 wireless zones
- 60 Areas
- 2500 Users in total
- Ethernet dialer onboard

G2 Cabinet

- Available as SPC42 and SPC52 series, SPCP332 Smart PSU
- Fits 7Ah 12V battery
- Room for 1 expander board

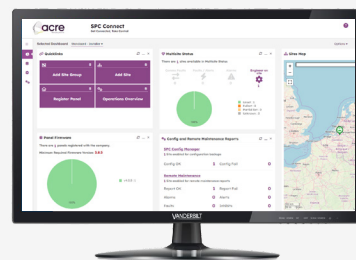
G3 Cabinet

- Available as SPC53 and SPC63 series, SPCP333 Smart PSU
- Fits 17Ah 12V battery
- Room for 4 expander boards

G5 Cabinet

- Available as SPC5350 and SPC6350 series, SPCP355 Smart PSU
- Fits 2x 24Ah 12V batteries
- Room for 6 expander boards
- VdS Class C

SPC Connect Management Platform



- Cloud-based application
- Access through web browser
- Encrypted communication between panel and cloud (FlexC 256bit AES)
- Support of full SPC panel range (min. Fw .3.8.5)
- SPC Connect Pro tool support

Installer Benefits

- Secured remote access from everywhere at any time via Web portal
- Company structure
- Installer/Engineer Management
- Firmware upgrade management
- Remote maintenance reports
- Remote programming
- Configuration backups
- Communication monitoring
- Multi-site user management
- Support for Multi-site operations

End User Benefits

- Secured remote access from everywhere at any time via Web portal and mobile App
- Alarm verification via mobile (optional)
- Email and push notification
- Multi-site support
- Remote Panel User Management

KEYPADS AND X-BUS PERIPHERAL

Keypads - Provide simple intuitive interfaces into the SPC system

SPCK42x

- Standard keypad
- 2x16 characters
- Optional EM card reader (421 model)
- Branded and non branded available
- EN Grade 3

SPCK52x

- Compact keypad
- 128x64 pixels graphical display
- Blue illuminated touch key keys
- Optional EM + MIFARE card reader (521 model)
- Thinnest security keypad on the market (17.5mm)
- Flush mount kit available
- EN Grade 3 & VdS C

SPCK62x

- Comfort keypad
- 128x64 pixels graphical display
- 15 user keys, 4 multi function keys and 1 navigation key
- Customizable logo in display
- Optional EM card reader (623 model)
- Embedded speaker/mic (623 model)
- EN Grade 3 & VdS C

PSUs - Monitored local power source for battery management and connected security devices

SPCP332

- Smart PSU with 8 inputs, 2 outputs in G2 housing. Also available in G3 (SPCP333) and G5 (SPCP355) housing

SPCP432

- Smart PSU with 2 door expander in G2 housing Also available in G3 (SPCP433)

Communications - Modules that enable communication via PSTN, 2G/3G/4G with central monitoring stations (CMS)

SPCN110

- PSTN Plug-on module for SPC panels

SPCN320 / SPCN342

- 2G/3G/4G GSM/GPRS Plug-on module for SPC panels (max. 2 per panel)

Mobile App

SPC Connect
(available in iOS and Android stores)

- Set, monitor, control. Any device, any location
- Door control
- User defined output control
- Multi-site support
- Control of SPC system
- Status of system
- Arming control
- Push notification
- Audio and video verification

Expanders & Gateways - Provide extended output capacity to the SPC system, Including advanced door control and wireless functionality

SPCE652

- 8 input, 2 output expander (PCB only version also available)

SPCE452

- 8 output expander

SPCA210

- 2 door / reader expander

SPCE110

- Keyswitch with 3 positions 2 tri-colour LEDs

SPCE120

- Indication expander with 16 LEDs, 4 function keys & EM card reader

SPCW120

- Wireless RF expander for wireless devices - for panel